



Norfolk Crescent, W2
£1,700 p/w



Norfolk Crescent, W2

£1,700 p/w

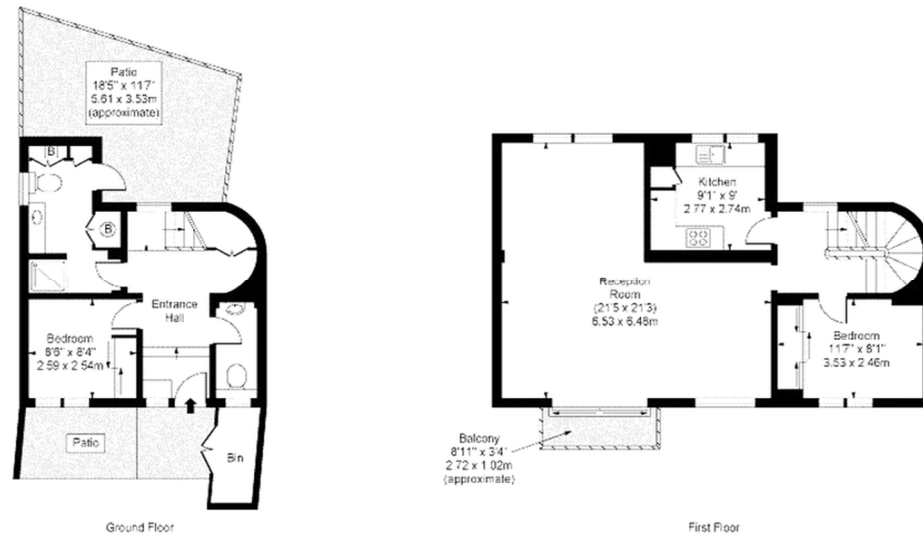
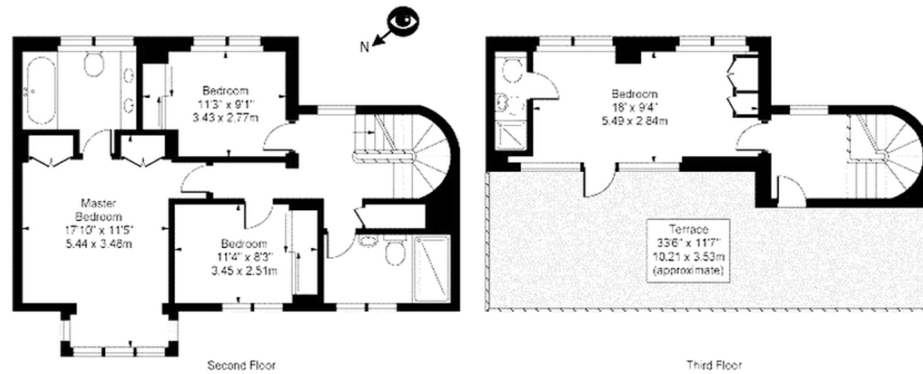
Presented in excellent condition throughout is this mid-terraced townhouse which spans over 1,800 sq ft. The property comprises of a large reception room, a separate modern kitchen, six bedrooms, four bathrooms, a guest W/C, two balconies, a patio and a stunning roof terrace.

Conveniently located for the transport links and local amenities in the popular Hyde Park Estate. Moments from Paddington Station (Heathrow Express) and nearby underground stations including Marble Arch and Lancaster Gate (Central line) and Edgware Road (District, Circle and Hammersmith & City lines).

Ref PCL230042

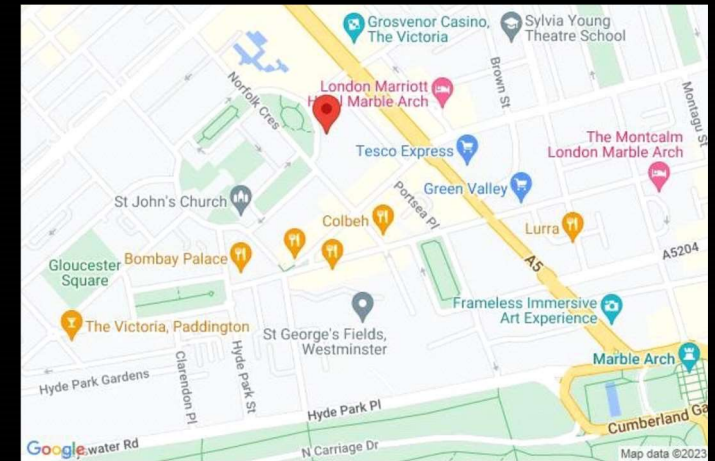


Norfolk Crescent, W2



Approx Gross Internal Area 1883 Sq Ft - 174.93 Sq M
(Excluding Bin)

For Illustration Purposes Only - Not To Scale
Floor Plan by www.bonmediagroup.com
Ref. No. P54865



Energy Efficiency Rating

	Current	Potential
Very energy efficient - lower running costs		
(92+) A		
(81-91) B		82
(69-80) C		
(55-68) D		
(39-54) E	43	
(21-38) F		
(1-20) G		
Not energy efficient - higher running costs		
England, Scotland & Wales	EU Directive 2002/91/EC	

For clarification, we wish to inform prospective tenants that we have prepared these lettings particulars as a general guide. We have not carried out a detailed survey, nor tested the services, appliances and specific fittings. Room sizes are approximate and rounded: they are taken between internal wall surfaces and therefore include cupboards/shelves, etc. Accordingly, they should not be relied upon for carpets and furnishings.